

STATE LEVEL HISTORIC DOCUMENTATION
LINKOUS PARK BRIDGE

Location: County Route 16/49, over Tug Fork River
Welch
McDowell County
West Virginia

USGS Welch Quadrangle

Date of Construction: 1920

Builder: Unknown

Present Owner: West Virginia Department of Transportation
Division of Highways
1900 Kanawha Boulevard, Building 5, Room A-110
Charleston, WV 25305

Present Use: Vehicular Bridge

Significance: The Linkous Park Bridge is significant under Criterion C due to its engineering significance. The bridge is an example of an uncommon type or unusual design element.

Project Information: The project has been undertaken due to the poor condition of the bridge. Any future deterioration of the bridge would result in its closure. The existing bridge warrants replacement. The documentation was undertaken in April 2012 in accordance with a Memorandum of Agreement among the West Virginia Department of Transportation and the West Virginia State Historic Preservation Office. These measures are required prior to replacement of this National Register eligible structure.

Randy Epperly III, Historian
West Virginia Division of Highways
Charleston, WV 25305
May 22, 2012

The Linkous Park Bridge is located on County Route 16/49 in McDowell County, West Virginia. The existing bridge is in Welch and crosses the Tug Fork River. Linkous Park Bridge is estimated to be built in 1920 by an unknown contractor. The bridge is now the only vehicular connection between downtown Welch and Linkous Park.

The bridge consists of one riveted steel plate and angle through girder span. The bridge is supported by two stone masonry abutments. The overall length of the bridge is 65'-3" and the deck width is 15'-10 1/2". The bridge has a concrete deck and no wearing surface, but does have concrete curbs on both sides. (WVDOH Bridge Files).

The Linkous Park Bridge is eligible under Criterion C for as an uncommon bridge type in West Virginia (Michael Baker Jr., Inc.). The steel girder and floorbeam system bridges were in use in West Virginia from 1890-1955, with the early period of use from 1890 to 1919 (Mead & Hunt, KCI, 2011).

In 1995 Norfolk Southern Railway added floorbeams and replaced the deck. In 1991, four floorbeams were replaced along with the deck over these floorbeams and the crane rail stringers. In 1992 state forces removed the lumber from the bottom of the deck, replaced 5 floorbeams, added a stringer, and applied primer and a rust inhibitor. In 1999 the railroad added stringers, welded angles to the ends and center of the floorbeams poured a new deck over the repaired floorbeams, and removed 24" of sidewalk to increase roadway width (WVDOH Bridge Files).



BIBLIOGRAPHY

Mead & Hunt, KCI. West Virginia Historic Bridge Survey. Steel Girder Bridges. 2011.

Michael Baker Jr., Inc. Phase 1 Cultural Resource Investigations for the Proposed Linkous Park Bridge Project, State Project No. S324-16/49-0.11 City of Welch, McDowell County, West Virginia. August 2011.

West Virginia Division of Highways, Bridge Files, Maintenance Division, Building 5, Capitol Complex, Charleston, West Virginia, March 2007.

STATE LEVEL HISTORIC DOCUMENTATION
INDEX TO PHOTOGRAPHS

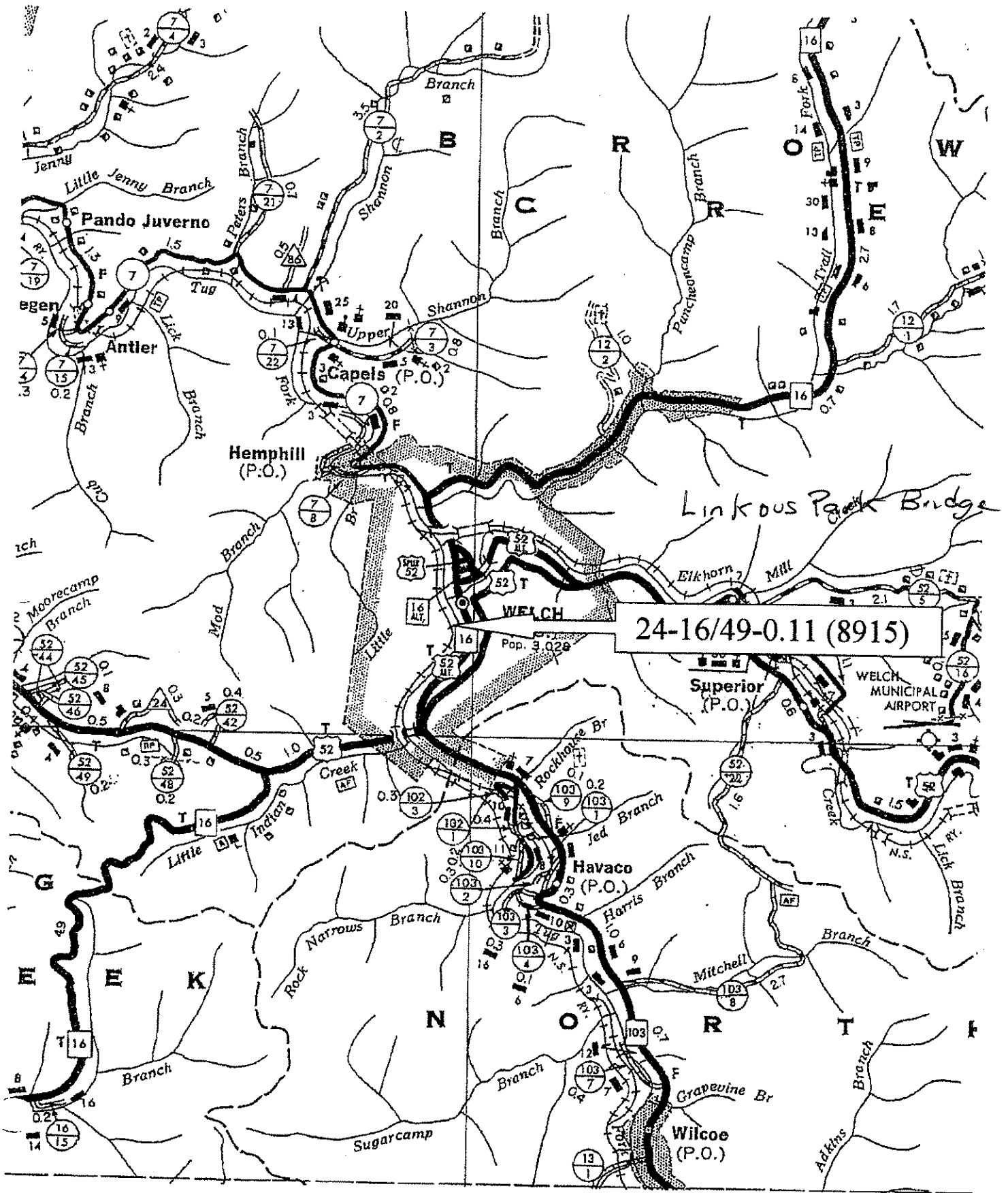
Linkous Park Bridge
County Route 16/49
Welch
McDowell County, West Virginia

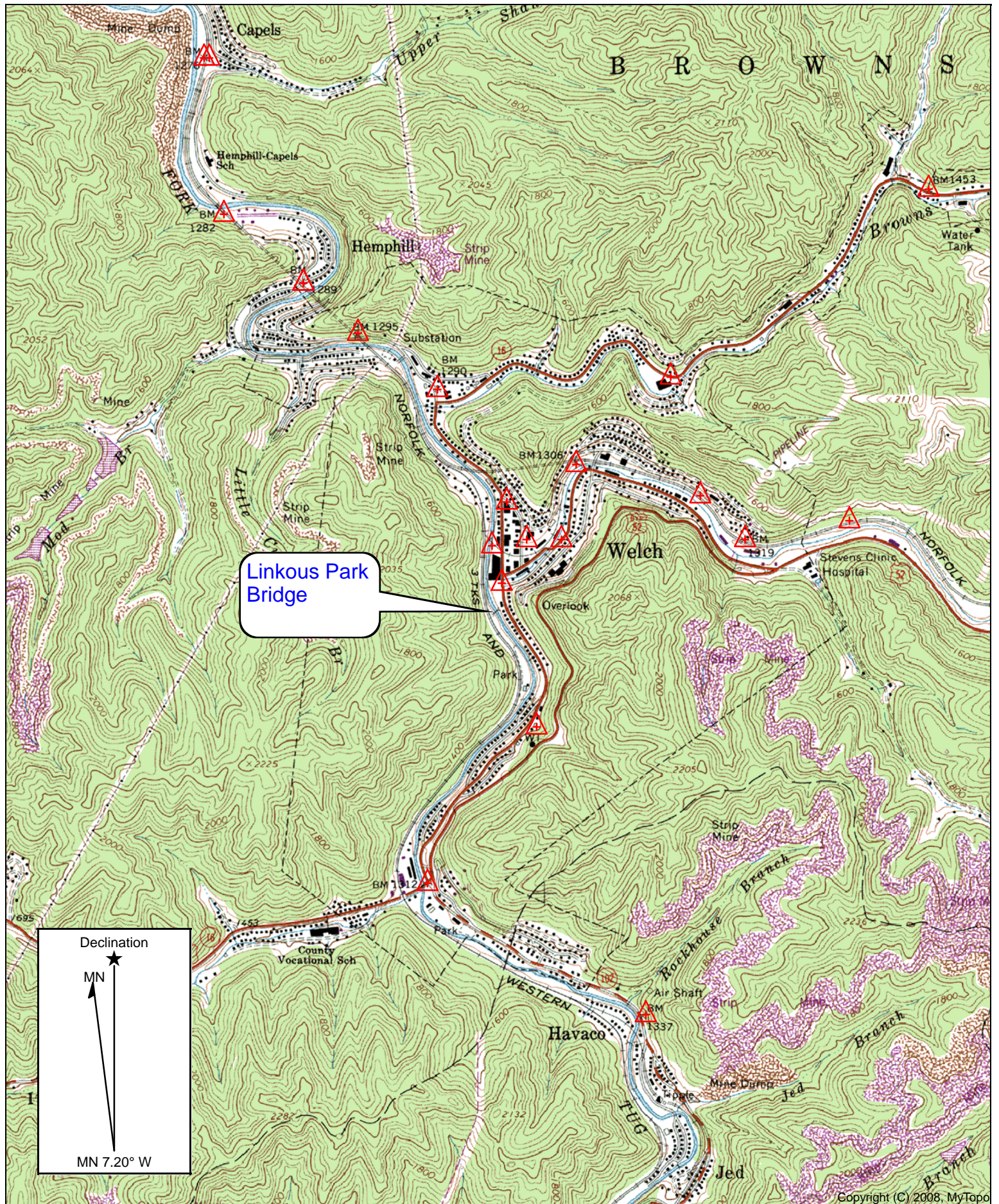
Photographer: Randy Epperly

May 15, 2012

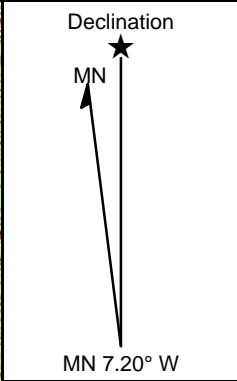
LINKOUS PARK BRIDGE-1	View of bridge looking northeast.
LINKOUS PARK BRIDGE-2	View of bridge looking east.
LINKOUS PARK BRIDGE-3	View of northern steel riveted parapet.
LINKOUS PARK BRIDGE-4	View of bridge looking southeast.
LINKOUS PARK BRIDGE-5	View of southern steel riveted parapet looking northeast.
LINKOUS PARK BRIDGE-6	View of stone masonry abutment number 2.
LINKOUS PARK BRIDGE-7	View of bridge looking northwest.
LINKOUS PARK BRIDGE-8	View of bridge and southern parapet looking east.

Original plans are not available.





Linkous Park Bridge



Linkous Park Bridge
 McDowell County
 S324-16/49-0.11

Location: 17 0448175 E 4142691 N

West Virginia Historic Bridge Inventory Form

Bridge No. 24-016/49-000.11 BARS No. 24A296 Federal Bridge No. 00000000024A296 Bridge Design No. 8915.0

IDENTIFICATION INFORMATION

SHPO Survey No. MD-1582 **Owner** State Highway Agency
Local Name LINKOUS PARK BRIDGE **Status** Extant - in service
Other Local Name

LOCATIONAL AND SETTING INFORMATION

District 10 **County** McDowell **Latitude** 37253600 **Longitude** 081351200
Location 0.11 MI NORTH OF US 52A **UTM-Northing**
Facility Carried By Structure COUNTY ROUTE 16/49 **UTM-Easting**
 UTM Zone
Features Intersected TUG FORK **Surrounding Land Use** Park
 Type of Development City - (areas of urban development, i.e. Charleston)

STRUCTURAL INFORMATION

Main Span Type Steel Girder and Floorbeam System - riveted **Structure Length (ft)** 65
Main Span Type Code 327 **Length of Maximum Span (ft)** 63
Number of Spans in Main Unit 001 **Average Daily Traffic** 000300 **Year** 2003
Number of Approach Spans 0000 **Sufficiency Rating** 0170 **Skew** 13
(Note: Data current as of April 2006 database)

BRIDGE DESCRIPTIVE INFORMATION

Year Built 1920 **Arrangement**
Year Reconstructed 0000 **Connection Type**
Truss Bridge Type **Truss Details**
Alteration(s) **Date of Alterations (Year)**

Architectural Treatment(s) **Bridge Plate Text**
Stone substructure N/A

BRIDGE HISTORY

Engineer or Designer Unknown **Builder or Fabricator** Unknown
Bridge Plan Location Unknown
Additional Details: Through girder bridge which is an uncommon type in West Virginia. Concrete deck with asphalt overlay and concrete curbs. Steel parapets with riveted connections. Some bolt repairs. Stone substructure. Near railroad.

NATIONAL REGISTER EVALUATION INFORMATION

National Register Determination

Reason Not Evaluated

National Register Determination Date

This bridge is an example of an uncommon type or displays an unusual design element that represents the individuality or variation of features particular to this bridge type.

This bridge retains the historic integrity necessary to convey its engineering significance and, therefore, is eligible for the National Register under Criterion C.



**MEMORANDUM OF AGREEMENT
BY AND AMONG
THE WEST VIRGINIA STATE HISTORIC PRESERVATION OFFICER
AND THE WEST VIRGINIA DIVISION OF HIGHWAYS
REGARDING IMPLEMENTATION OF THE LINKOUS PARK BRIDGE
REPLACEMENT PROJECT
STATE PROJECT #S324-16/49-0.11
WELCH, MCDOWELL COUNTY, WEST VIRGINIA
MARCH 2012**

WHEREAS, the West Virginia Division of Highways (WVDOH) proposes to replace Linkous Park Bridge, which spans Tug Fork River in Welch, McDowell County, hereinafter referred to as the Project. The improvements involve the construction of a new bridge, redesigning 400 feet of County Route 16/49, and the removal of the existing bridge using state funds; and

WHEREAS, the WVDOH has determined that the Project will have an adverse effect upon the Linkous Park Bridge, a property eligible for the National Register of Historic Places (NRHP); and

WHEREAS, the WVDOH has consulted with the West Virginia State Historic Preservation Officer (WVSHPO) pursuant to West Virginia Code Chapter 29, Article 1 and its implementing regulations (82 CSR 2), as well as 36 CFR Part 800.5 Implementing Section 106 of the National Historic Preservation Act; (16 U.S.C., 470f); and

WHEREAS, the WVDOH has determined that the Project will not affect archaeological properties;

WHEREAS, the WVDOH contacted the Preservation Alliance of West Virginia, Coal Heritage Authority, McDowell County Historical Society, and Welch Historic Landmarks Commission regarding the Project. No response was received from these groups.

NOW, THEREFORE, the WVSHPO and the WVDOH agree that the undertaking will be implemented in accordance with the following stipulations in order to take into account the effects of the undertaking on historic properties.

STIPULATIONS

The WVDOH shall ensure that the following stipulations are carried out:

Linkous Park Bridge

- I. Linkous Park Bridge will be documented in its present historic setting. The documentation package will include 5"x7" black and white digital prints in accordance with the National Register of Historic Places and National Historic Landmarks Survey Photo Policy Expansion of March 2005. Also, the documentation will be sent to the Welch Historic Landmarks Commission, McDowell County Historical Society, and the McDowell County Public Library in Welch, West Virginia.
- II. A brief history of the structure will be included along with fully completed West Virginia Historic Property Inventory forms and copies of plan sheets and drawing of the bridge from WVDOH bridge files if they are available.
- III. A brochure of the Linkous Park Bridge will be developed by WVDOH and distributed to the McDowell County Public Library in Welch, Welch Historic Landmarks Commission, and McDowell County Historical Society. The WVSHPO will be given the opportunity to review all educational materials developed for this stipulation.
- IV. The bridge will be documented on a future website listing historic bridges once the WV Historic Bridge Survey is complete.

V. Duration

This MOA will expire if its stipulations are not carried out within five (5) years from the date of its execution. At such time, and prior to work continuing on the undertaking, the WVDOH shall execute a MOA pursuant to 82 CSR 2.5.4.d. Prior to such time, WVDOH may consult with other signatories to reconsider the terms of the MOA and amend it in accordance. WVDOH shall notify the signatories as to the course of action it will pursue.

VI. Post-Review Discoveries

If any unanticipated discoveries of historic properties or archaeological sites, including human burial sites and/or skeletal remains, are encountered during the implementation of this undertaking, work shall be suspended in the area of the discovery until the WVDOH has developed and implemented an appropriate treatment plan in consultation with the WVSHPO pursuant to 36 CFR 800.13 (b).

VII. Monitoring and Reporting

Each year following the execution of this MOA until it expires or is terminated, WVDOH shall provide all parties to this MOA a summary report detailing work carried out pursuant to its terms. Such report shall include any scheduling changes proposed, any problems encountered, and any disputes and objections received in WVDOH's efforts to carry out the terms of this MOA.

VIII. Amendments

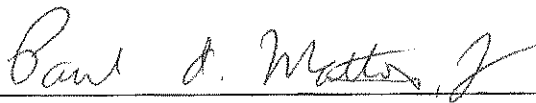
This MOA may be amended when such an amendment is agreed to in writing by all signatories. The amendment will be effective on the date a copy signed by all of the signatories is filed with the SHPO.

IX. Termination

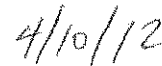
If any signatory to this MOA determines that its terms will not or cannot be carried out, that party shall immediately consult with the other parties to attempt to develop an amendment per Stipulation VIII, above. If within thirty (30) days (or another time period agreed to by all signatories) an amendment cannot be reached, any signatory may terminate the MOA upon written notification to the other signatories.

Once the MOA is terminated, and prior to work continuing on the undertaking, WVDOH must execute a MOA pursuant to 82 CSR 2.5.4.d.

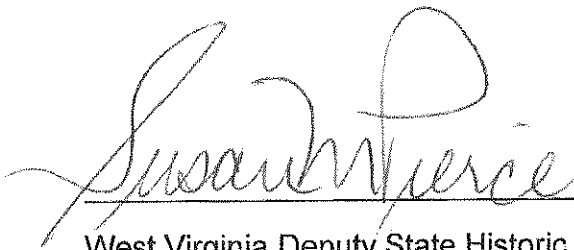
EXECUTION of the Memorandum of Agreement by the WWSHPO and the WVDOH, and implementation of its terms evidence that the WVDOH has afforded the SHPO an opportunity to comment on the Linkous Park Bridge Replacement project and its effects on historic properties, and that the WVDOH has taken into account the effects of the undertaking on the historic property.



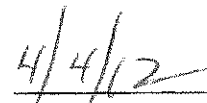
West Virginia Division of Highways



Date



West Virginia Deputy State Historic Preservation Officer



Date







